




# PET/PETE #1 - transparent thermoforms (pressed from single sheet)



YES	NO
<p>Clear/transparent, thermoform Bottles that don't normally go into mixed recycling. Clean with #1 PET/PETE</p> <p>FWR prefers food grade packaging (but will be ok with some non-food grade if it comes in and we don't want to reject)</p>	<p><b>Opaque - not see-thru</b> <b>No dirty items</b> <b>No items w/o resin code</b></p>
<p>Clamshells, cups, tubs, lids, boxes trays, egg cartons that don't belong in mixed recycling (but if people bring them in we can accept, but will give instructions) - the tub definition has been messed with so I understand if folks get confused at Metro new tub def.</p>	
	
 <p>cups</p>	<p><b>No opaque cups</b></p>

# PET/PETE #1 - small bottles

**YES**

Bottles that don't normally go into mixed recycling. (less than 6 ounces).

Labels are OK but remove the caps.

Items must be clean with visible #1 PET/PETE code

Medication bottles, small shampoo and hygiene bottles



small metal on the mouth of the bottle is OK  
Labels are OK

**NO**



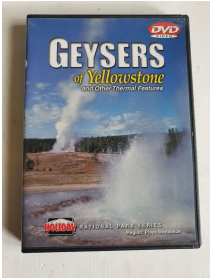

**No dirty items.**

**No items which contained hazardous chemicals (automotive fluids, etc)**

**No trays, lids, caps**

# PP - polypropylene #5

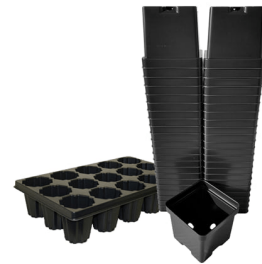


YES	NO
<p>Clean with no food residue and a visible #5 PP resin code. No size or shape limit</p>	<p>No dirty or moldy items No missing resin codes</p>
<p>Medication and prescription bottles</p> 	<p>No cap if not #5</p>
<p>Example #5 items: cups, trays, lids, DVD cases, etc.</p> 	
<p>Storage bins and lids</p>	
<p>DVD cases with plastic covering and paper inserts removed</p> 	<p>Remove the paper and plastic cover</p> 
<p>Tofu containers with a small amount of plastic label stuck around the edges is fine.</p> 	<p>No #2 Tofu containers.</p> <p>No containers with mixed types of plastic: when the lid is a different resin code from the bottom, they must be separated.</p>



**No dirty pots.**

**No crinkly plant pots that are crushed easily . These are often #6 plastic and can go to Agilyx.**



**Rigid Planter pots can be left curbside, however many people don't know this, so we can take them as long as they have a #5 resin code**

**Note: Many nurseries take planter pots for reuse, ask them.**



**ALWAYS check the resin code. Some items look similar but are different, see below. The #1 PETE bottle is more clear and the #5 PP is more cloudy. Both are medication bottles.**



**5.3 oz yogurt tubs can hold 6 fluid oz in volume. They can be recycled curbside. We can take those with #5 resin code.**